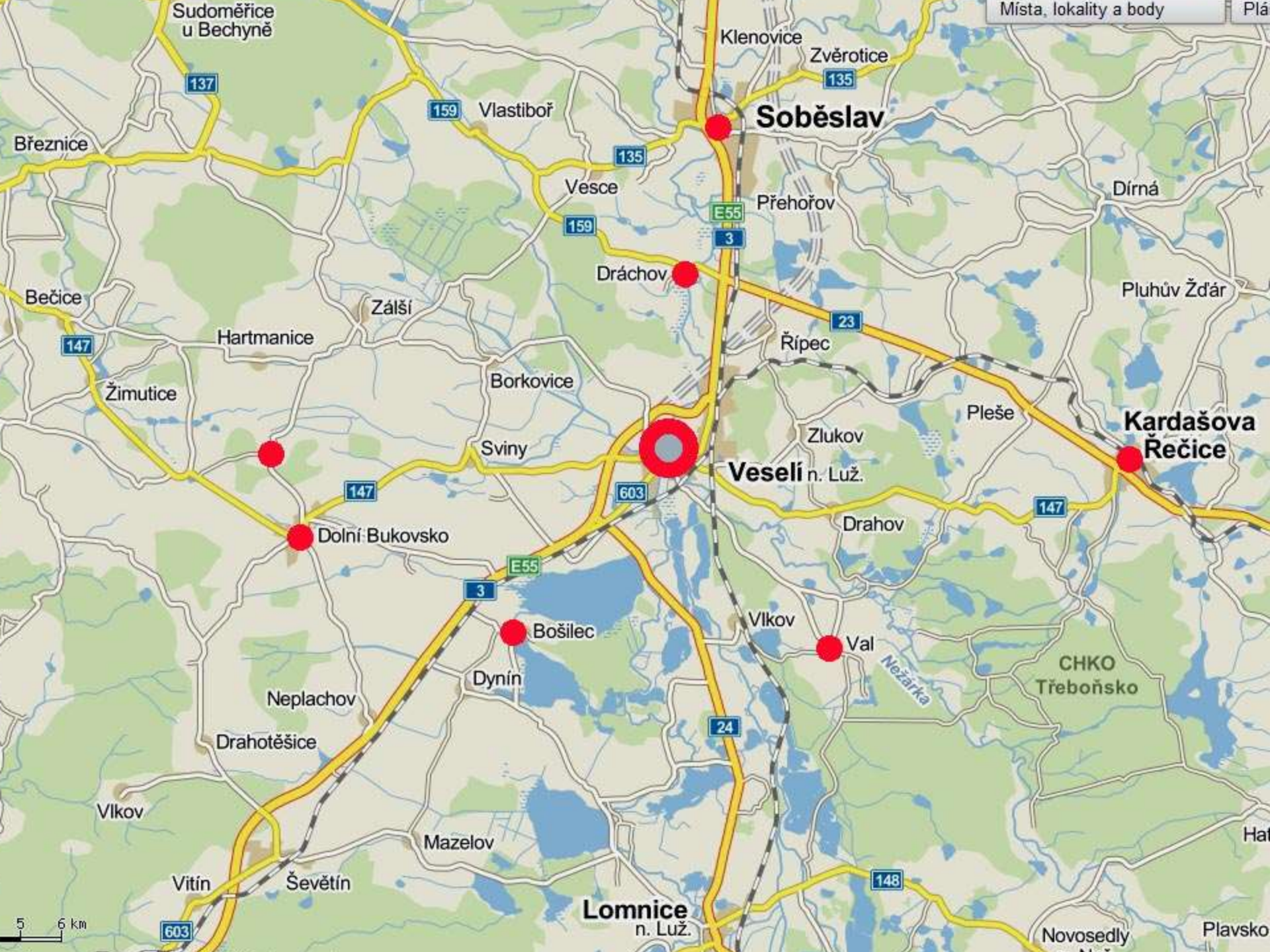


Kostel Povýšení sv. Kříže  
ve Veselí nad Lužnicí  
a sakrální architektura na Veselsku  
v proměnách času

*Roman Lavička*













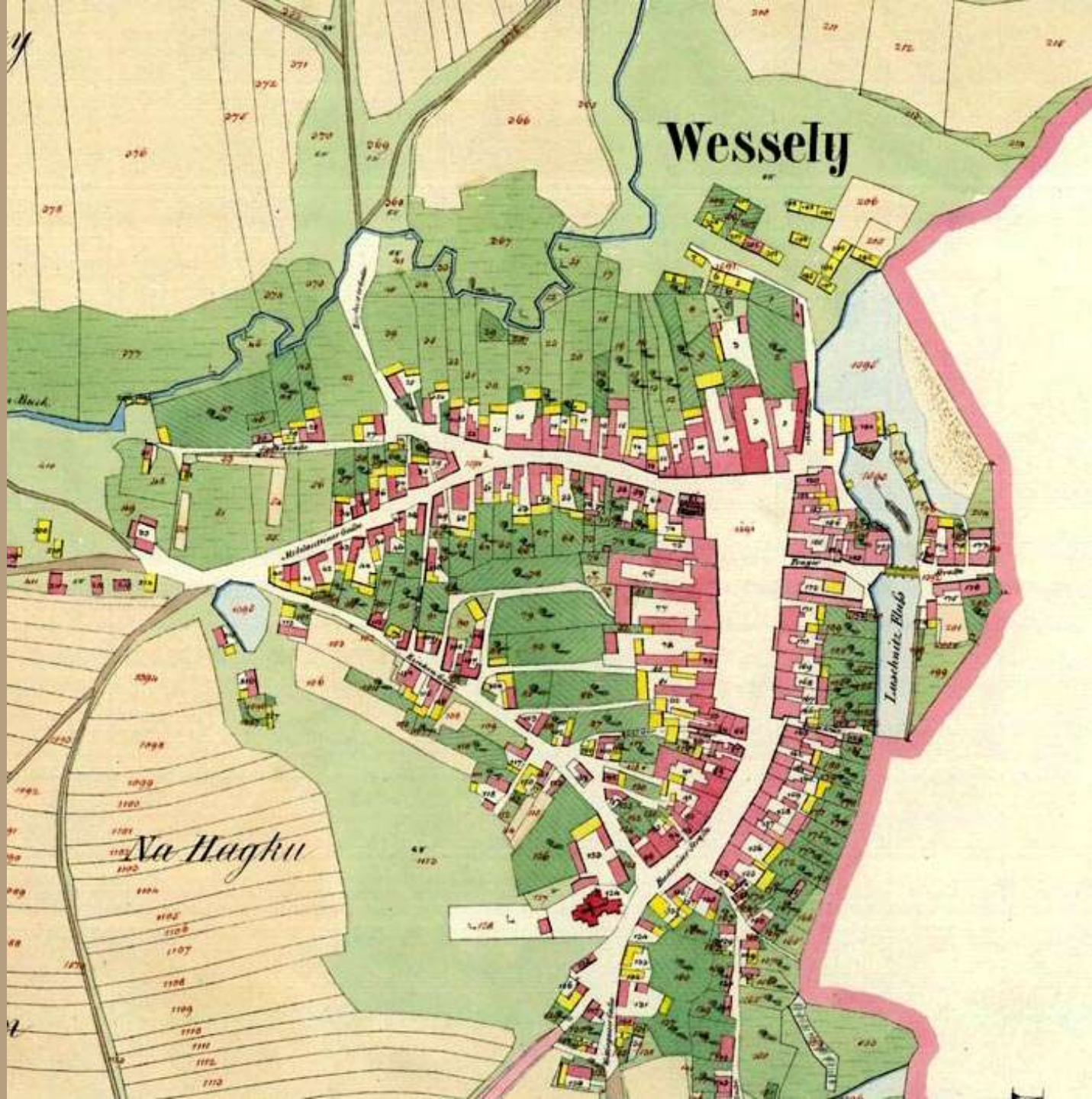








# Wessely



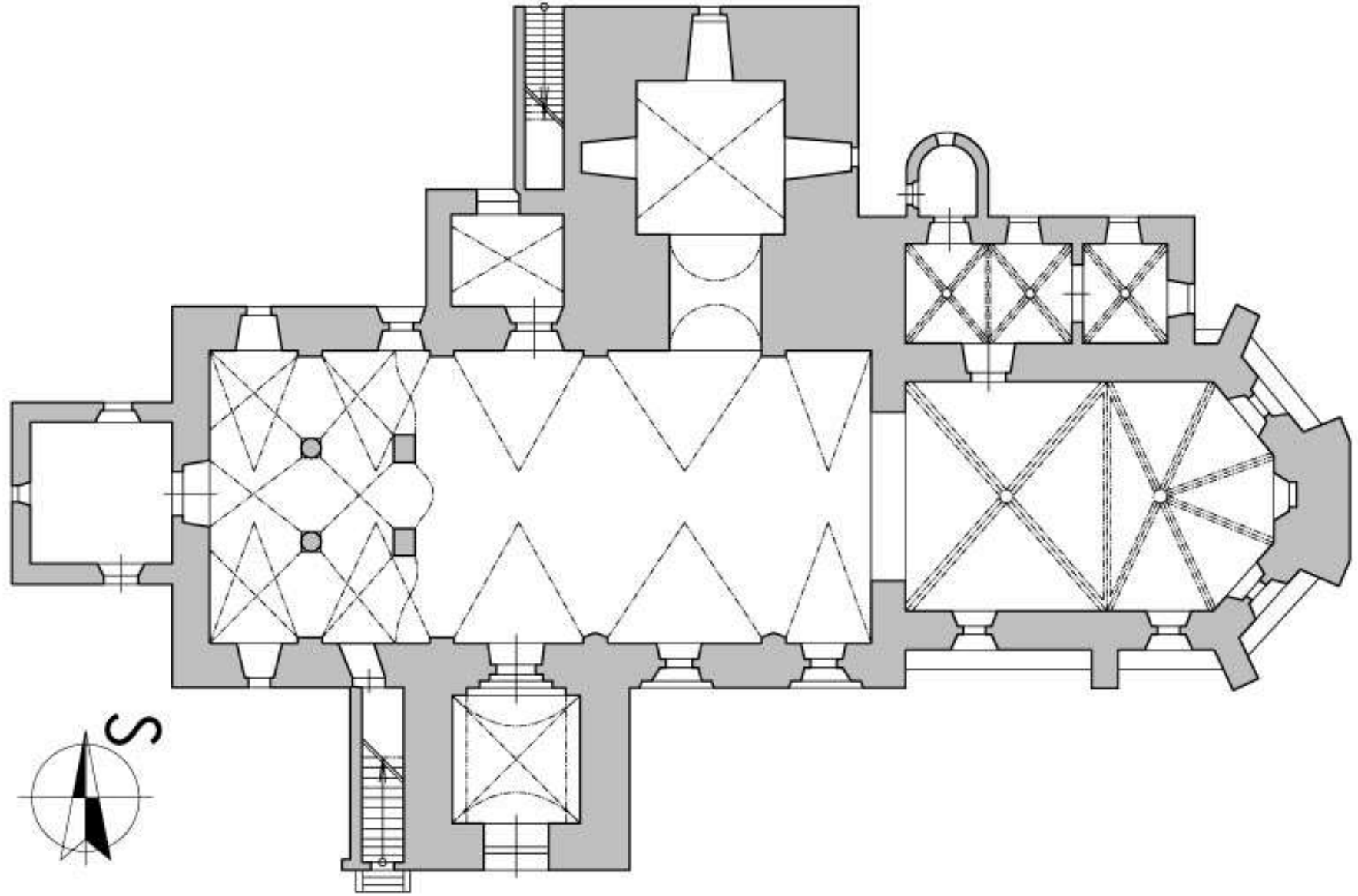
*Na Haghu*



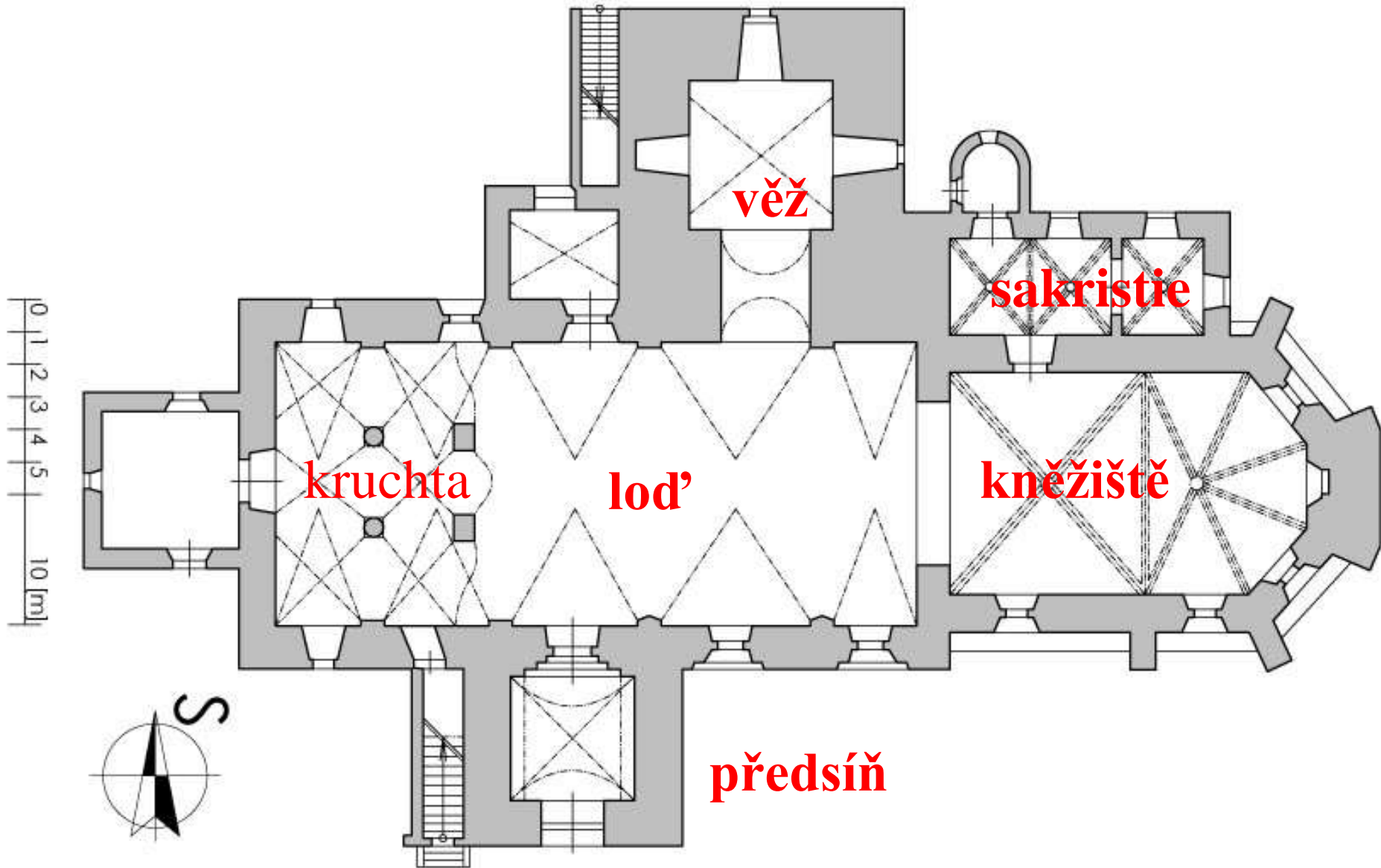




0 1 2 3 4 5  
10 [m]

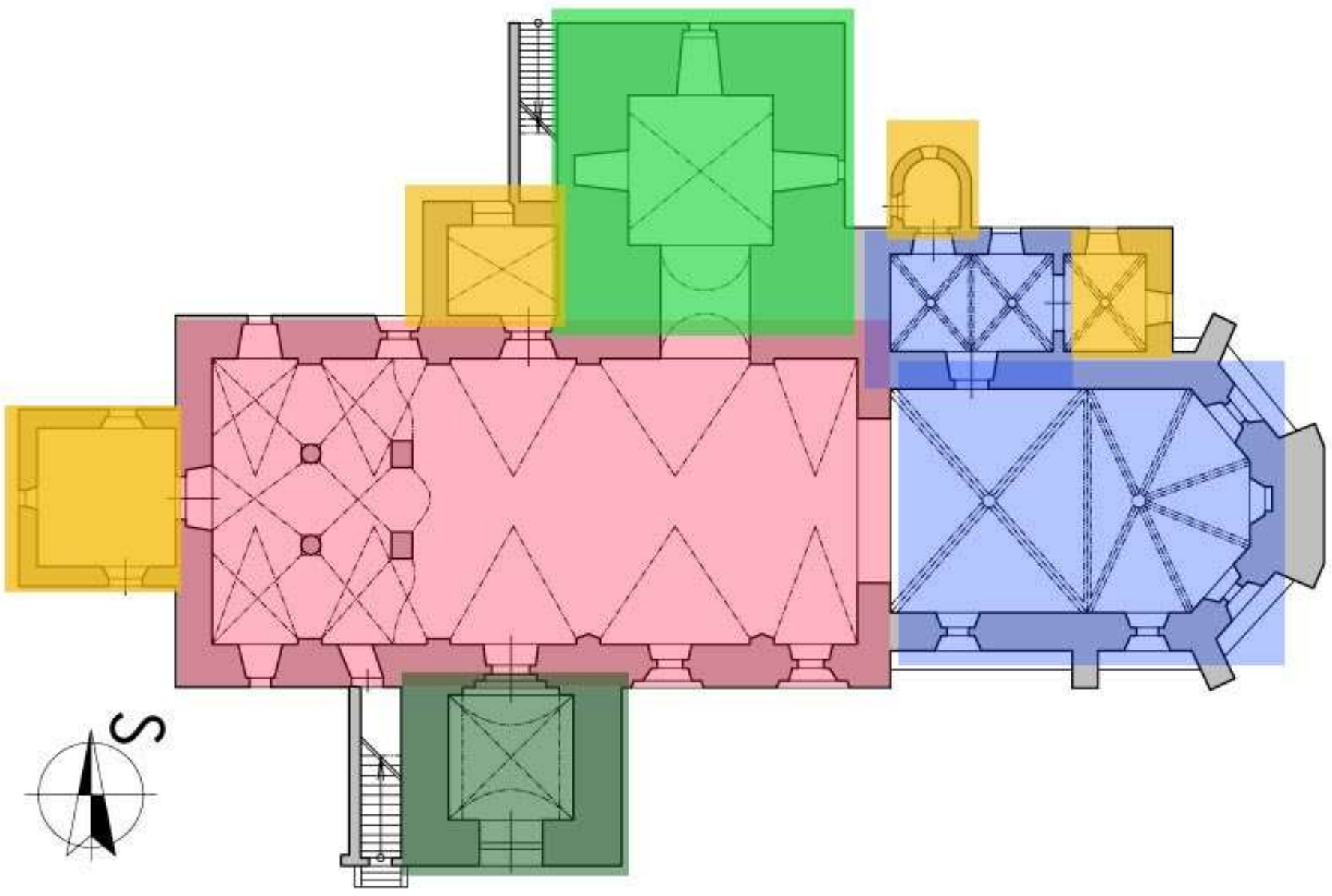








0 1 2 3 4 5  
10 [m]





# **KOSTEL ve 13. století**







# **KOSTEL ve 14. století**















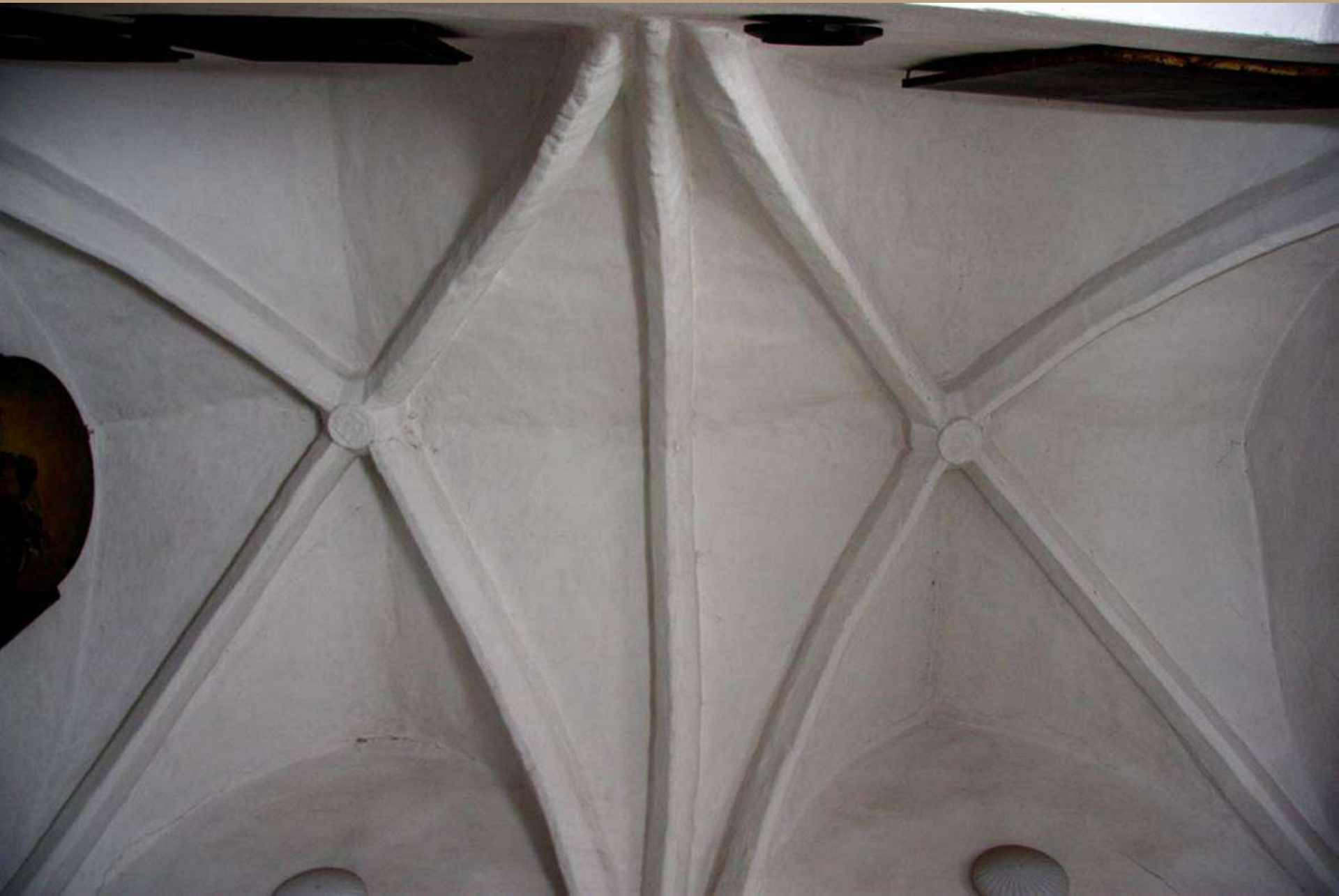
















# **KOSTEL, nástěnné malby ve 14. století**



































# Dolní Bukovsko, Narození Panny Marie

























# Dráčov, sv. Václav













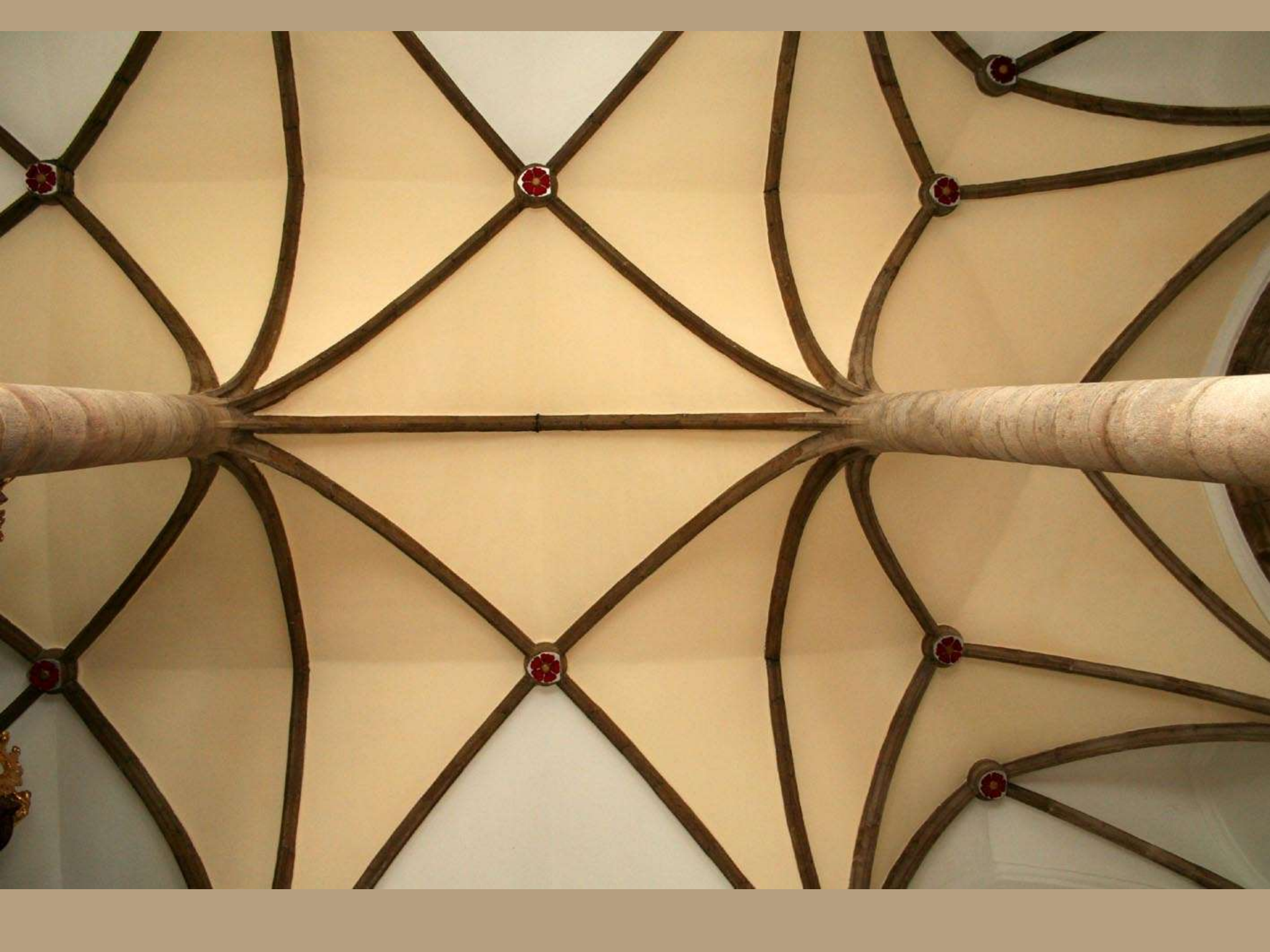






# Soběslav, sv. Vít









# Soběslav, sv. Petr a Pavel











# **KOSTEL na přelomu 15. a 16. století**













# **KOSTEL v 16. století**











SANCUS  
LUCAS

SANCUS  
SANCUS

SANCUS +  
MATHEUS



BEATUS VIRGILIUS



















2009



**Hamr,  
Nejsvětější Trojice  
1585**

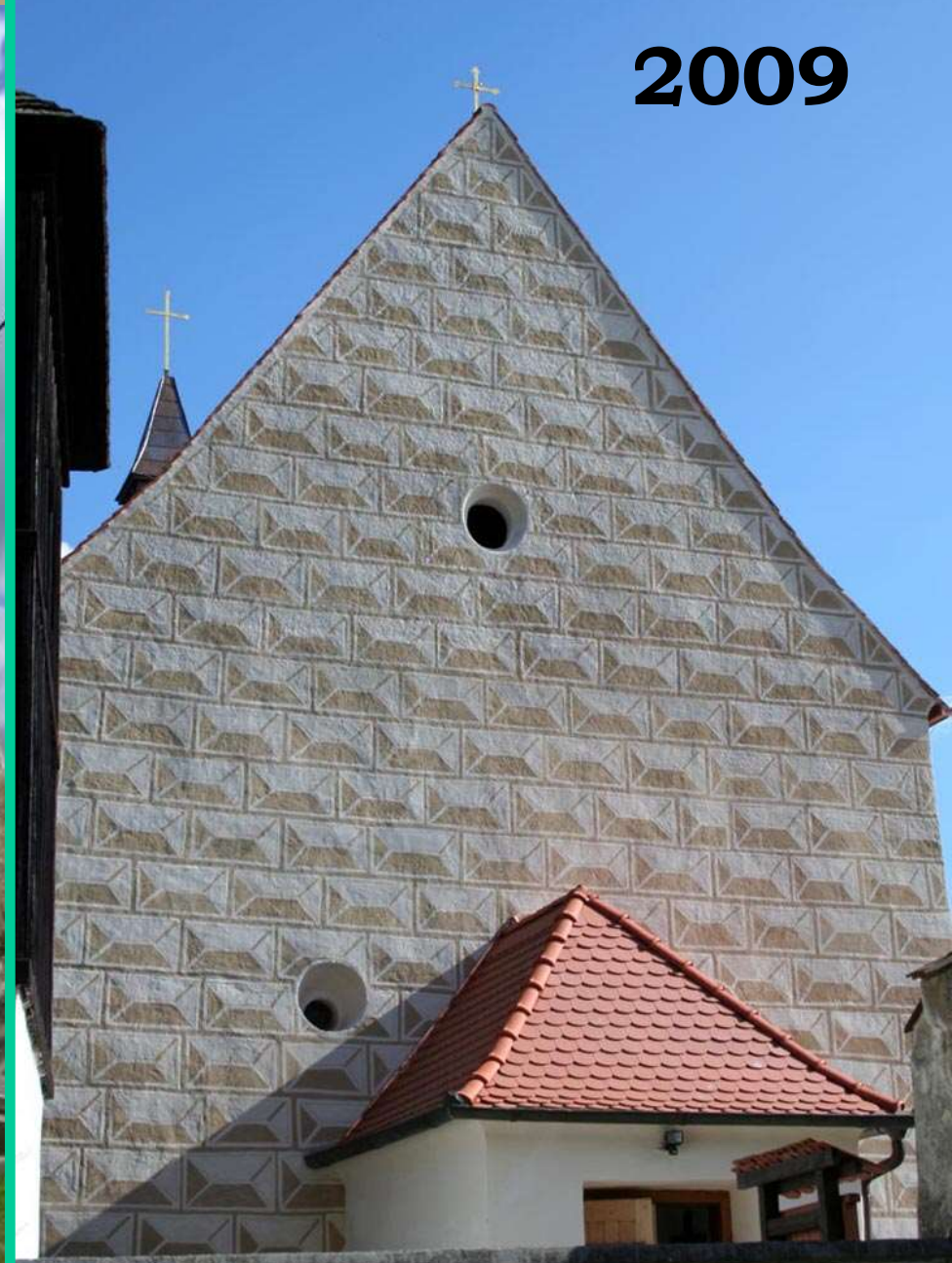




**2008**



**2009**











































MATHEVS

MARK





















# **KOSTEL v 17. a 18. století**







KROVNE OPIJANI FARNEŽI  
DIOLE NAŠE LICE

- 1. Antun 1824 - 1903
- 2. Antun 1824 - 1903
- 3. Antun 1824 - 1903
- 4. Antun 1824 - 1903
- 5. Antun 1824 - 1903
- 6. Antun 1824 - 1903
- 7. Antun 1824 - 1903
- 8. Antun 1824 - 1903
- 9. Antun 1824 - 1903
- 10. Antun 1824 - 1903
- 11. Antun 1824 - 1903
- 12. Antun 1824 - 1903
- 13. Antun 1824 - 1903
- 14. Antun 1824 - 1903
- 15. Antun 1824 - 1903
- 16. Antun 1824 - 1903
- 17. Antun 1824 - 1903
- 18. Antun 1824 - 1903
- 19. Antun 1824 - 1903
- 20. Antun 1824 - 1903





1658









































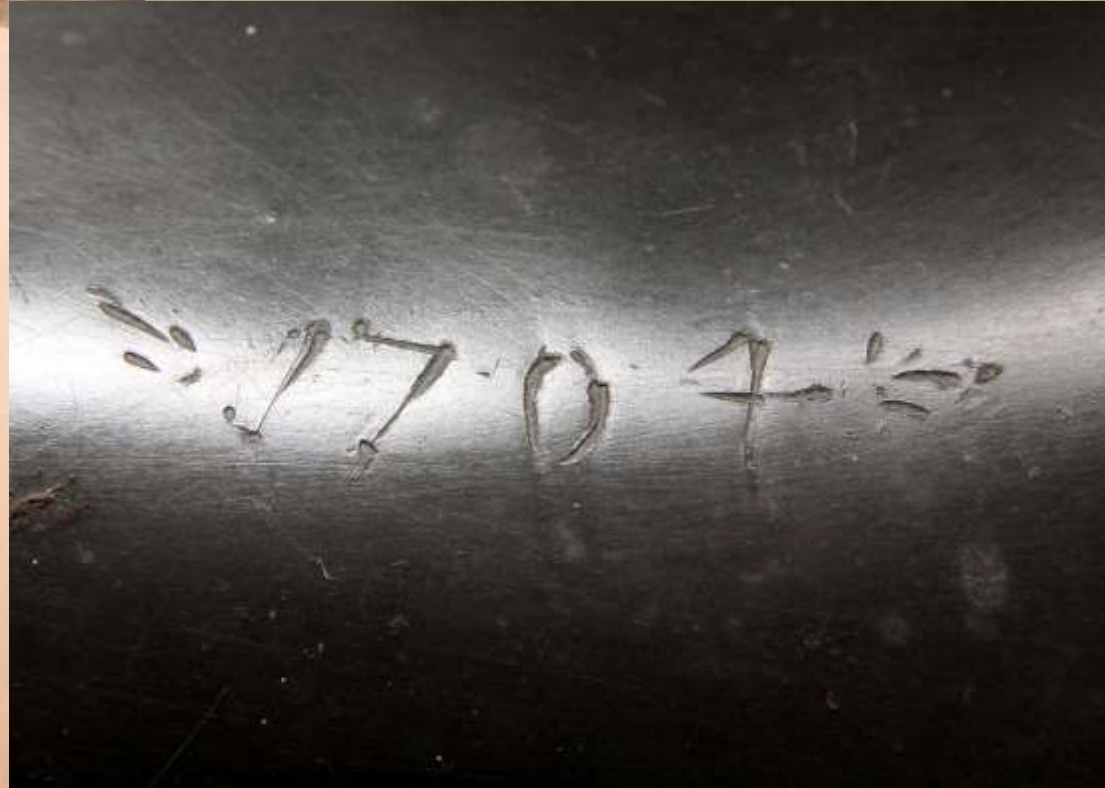


































# Bošilec, sv. Martin

















HOSTINEC.



**Děkuji za pozornost.**

